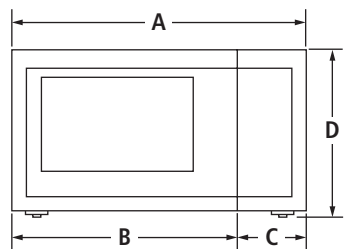


BUILT-IN/COUNTERTOP MICROWAVE OVEN

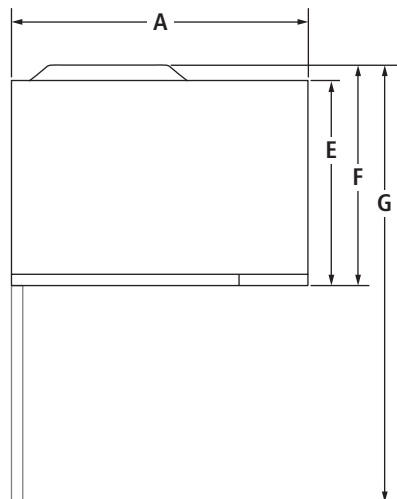
JMC1116A – 21¾" x 13" x 17¾"

PRODUCT DIMENSIONS

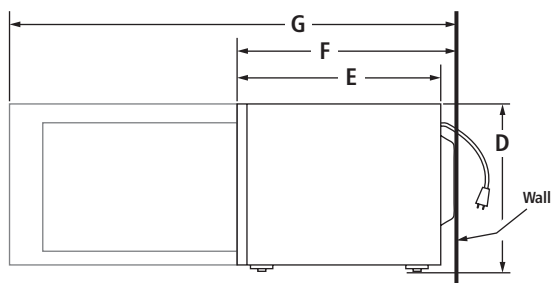


FRONT VIEW

| MODEL #  |                            | JMC1116A                       |      |
|----------|----------------------------|--------------------------------|------|
|          |                            | in                             | cm   |
| <b>A</b> | Overall width              | 21 <sup>3</sup> / <sub>4</sub> | 55.3 |
| <b>B</b> | Width of door              | 17 <sup>3</sup> / <sub>4</sub> | 45.1 |
| <b>C</b> | Width of control panel     | 4                              | 10.2 |
| <b>D</b> | Overall height             | 13                             | 33.0 |
| <b>E</b> | Depth of cabinet with door | 16                             | 40.6 |
| <b>F</b> | Overall depth with door    | 17 <sup>3</sup> / <sub>4</sub> | 45.1 |
| <b>G</b> | Depth with door open 90°   | 34 <sup>3</sup> / <sub>4</sub> | 88.3 |



TOP VIEW

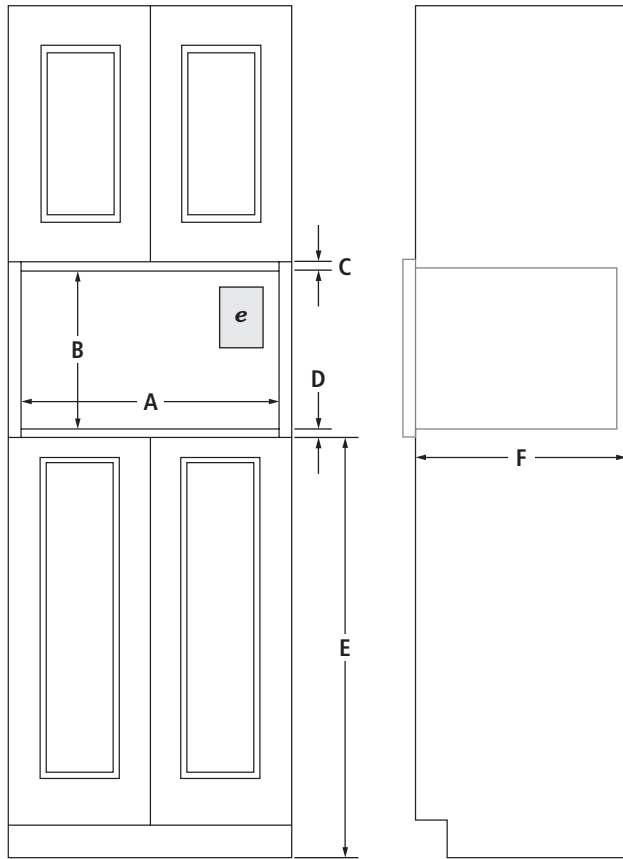


SIDE VIEW

BUILT-IN/COUNTERTOP MICROWAVE OVEN

JMC1116A – 21¾" x 13" x 17¾"

OPENING/CLEARANCE DIMENSIONS



FRONT VIEW

SIDE VIEW

| MODEL #  |                                                   | JMC1116A                          |           |
|----------|---------------------------------------------------|-----------------------------------|-----------|
|          |                                                   | in                                | cm        |
| <b>A</b> | Width of cutout                                   | 23 <sup>1</sup> / <sub>8</sub>    | 58.7      |
| <b>B</b> | Height of cutout (min.-max.)                      | 17-17 <sup>1</sup> / <sub>8</sub> | 43.2-43.5 |
| <b>C</b> | Top of cutout to bottom of upper cabinet (min.)   | 2                                 | 5.1       |
| <b>D</b> | Bottom of cutout to top of single oven (min.)     | 3                                 | 7.6       |
|          | Bottom of cutout to top of cabinet door (min.)    | 1 <sup>5</sup> / <sub>8</sub>     | 4.0       |
| <b>E</b> | Recommended height from bottom of cutout to floor | 36                                | 91.4      |
| <b>F</b> | Depth of cutout (min.)                            | 22 <sup>3</sup> / <sub>4</sub>    | 57.8      |
| <b>e</b> | Recommended electrical connection location        |                                   |           |

NOTE: Trim kit frame extends 1<sup>1</sup>/<sub>16</sub>" (2.7 cm) above and below the cutout opening.

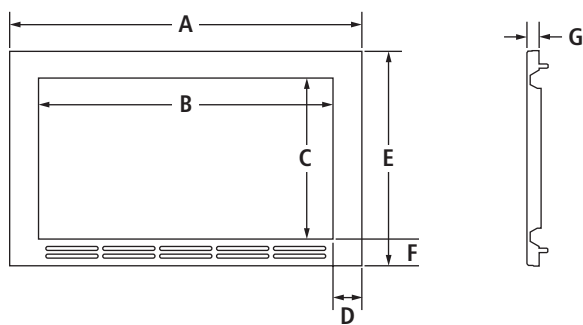
**ELECTRICAL REQUIREMENTS**

120 volt, 60 Hz, AC only, 15- or 20-amp fused, electrical supply is required. A time-delay fuse or dedicated circuit is recommended. Minimum length of power cord is 30" (76.2 cm). Do not use an extension cord.

**VENTING REQUIREMENTS**

If microwave oven is built in, a trim kit is required for proper ventilation.

TRIM KIT DIMENSIONS



| MODEL #  | MK2160            |                                | MK2167 |                                |      |
|----------|-------------------|--------------------------------|--------|--------------------------------|------|
|          | in                | cm                             | in     | cm                             |      |
| <b>A</b> | Overall width     | 29 <sup>3</sup> / <sub>4</sub> | 75.6   | 26 <sup>7</sup> / <sub>8</sub> | 68.2 |
| <b>B</b> | Width of opening  | 22 <sup>3</sup> / <sub>4</sub> | 57.8   | 22 <sup>3</sup> / <sub>4</sub> | 57.8 |
| <b>C</b> | Height of opening | 12 <sup>1</sup> / <sub>4</sub> | 31.1   | 12 <sup>1</sup> / <sub>4</sub> | 31.1 |
| <b>D</b> | Width of frame    | 3 <sup>1</sup> / <sub>2</sub>  | 8.9    | 2 <sup>1</sup> / <sub>16</sub> | 5.2  |
| <b>E</b> | Overall height    | 19 <sup>1</sup> / <sub>8</sub> | 48.6   | 19 <sup>1</sup> / <sub>8</sub> | 48.6 |
| <b>F</b> | Height of frame   | 3 <sup>7</sup> / <sub>16</sub> | 8.7    | 3 <sup>7</sup> / <sub>16</sub> | 8.7  |
| <b>G</b> | Depth of frame    | 1 <sup>3</sup> / <sub>16</sub> | 3.0    | 1 <sup>3</sup> / <sub>16</sub> | 3.0  |